

MILBOOK



Windows



IP65



GPS



Dual-battery



Fingerprint



Camera



NFC



4G/5G



WiFi



Bluetooth

MILBOOK R14U 14 inch Fully Rugged Notebook



AI Support

Performance

- Intel® Core™ Ultra 5 / Ultra 7 processors (Series 1)
- iGfx/dGfx (Intel Xe LPG Graphics)
- Support Windows 11 Pro

Communication

- High speed Wi-Fi 6
- Support M.2 interface 5G/4G selection
- Bluetooth BT5.1 (BLE) class 1 Function

Function

- 14 inch FHD (1000 nits) Optional touch screen
- Rich interfaces and extended function can meet various needs
- 4850 mAh/56 Wh+1300 mAh/14.4 Wh dual battery, Large battery support hot-swappable

Reliability

- Press fingerprint identification
- IP65 high protection level, 1.22 m fall resistant
- In accordance with MIL-STD-810H

Product Six Views



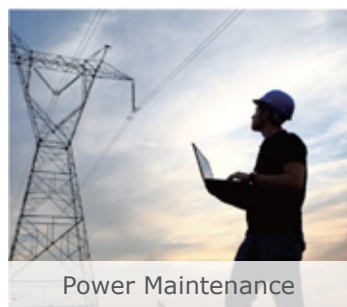
* All technical data, specification and performance figures subject to change without notice.

Specification Parameter

Basic parameters		Performance parameter	
Dimension	363.2 x 287.4 x 42.1 mm	CPU	Intel Meteor Lake-H I5 125 H 14 cores and 18 threads, up to 4.50 GHz, integrated 18 MB SmartCache, TDP 28 W Optional: Intel Meteor Lake-H i7 155H processor with 16 cores and 22 threads, up to 4.80 GHz, integrated 24 MB SmartCache, TDP 28 W
Display	FHD 14 inch 16:9 Resolution: 1920x1080 Brightness: 1000 nits	RAM	16 GB DDR5 (4800 MHz) Optional: 32/64 GB DDR5
Touch Panel	Optional 10-Point Capacitive Screen, G+G, Corning Gorilla Glass; Hardness above 7H; Scratch-resistant; Supports glove touch	ROM	256/512/1024 GB SSD
Camera	Front 5.0 MP	GPU	iGfx/dGfx (Intel Xe LPG Graphics)
I/O Interfaces	USB3.2 x1, USB3.0 x1, USB2.0 x1 TYPE-C, Support Thunderbolt 4 Φ3.5 mm Standard Earphone Jack x1 HDMI 2.0a mini x1 SIM x1 TF x1 RJ45 x1 10M/100M/1000M adaptive RJ45 x1 10M/100M/1000M adaptive (USB 2.0) Supports Gigabit Protocol RS232 x1,9 fully functional lines DC19V/3.78 A Φ5.5 mm Power port x1 12PIN Pogo Pin (USB & Charging) x1 Anti-theft Lock Slot x1 Right-side Cooling Vent x1 Left-side docking station, optional M.2-2280 PCIe interface x1, supports SSD; Optional: M.2 E-KEY interface x1 for custom modules.	Communication	
Battery (Built in)		WIFI	Wi-Fi 6 802.11 (a/b/d/e/g/h/i/k/n/r/u/v/w/ac/ax)
Capacity	1300 mAh/ 11.1 V (14.4 Wh)	Bluetooth	BT5.1 (BLE) class 1
Type	Built-in Polymer Lithium-ion Battery, Non-removable	2G/3G/4G	4G European Standard LTE-FDD: B1/3/5/7/8/20/28 LTE-TDD: B38/40/41
Endurance	1.5 hrs (Default 50% volume, 200 lumens brightness, playing 1080P HD video)	5G	5G Optional M.2 5G NR NSA n1/ 2/ 3/ 5/ 7/ 8/ 12/ 13/ 14/ 18/ 20/ 25/ 26/ 28/ 29/ 30/ 38/ 40/ 41/ 48/ 66/ 70/ 71/ 75/ 76/ 77/ 78/ 79/ SA n1/ 2/ 3/ 5/ 7/ 8/ 12/ 13/ 14/ 18/ 20/ 25/ 26/ 28/ 29/ 30/ 38/ 40/ 41/ 48/ 66/ 70/ 71/ 75/ 76/ 77/ 78/ 79 LTE LTE-FDD B1/ 2/ 3/ 4/ 5/ 7/ 8/ 12/ 13/ 14/ 17/ 18/ 19/ 20/ 25/ 26/ 28/ 29/ 30/ 32/ 66/ 71 LTE-TDD B34/ 38/ 39/ 40/ 41/ 42/ 43/ 48 LAA B46 UMTS WCDMA B1/ 2/ 4/ 5/ 8/ 19
Battery (Hot-swappable)		GPS	Supports single GPS or single glonass, default GPS
Capacity	4850 mAh/ 11.55 V 56 Wh	Reliability	
Type	Removable Polymer Lithium-ion Battery, Hot-swappable	MIL-STD-810H	1.2 m drop resistance
Endurance	8 hrs (Playing 1080P HD video, Conditions: System in balance mode, 30% brightness, 320 lumens, 30% volume (70 dB at 10 cm), WiFi and Bluetooth turned off)	Working temperature	-20 °C to 60 °C
		Storage temperature	-30 °C to 70 °C
		Humidity	95% Non-Condensing
		Data Collection	
		NFC	Optional, NXP300
		Fingerprint	Built in, x1 SPI Fingerprint (Power-On Login)
		Keyboard	US Layout Keyboard with Backlight

Application Range

Various modules and accessories can be selected to meet customers' application in various industries.



Power Maintenance



Equipment Testing



Automobile Manufacturing



Energy Industry